



GAT MONTHLY MEMBERSHIP PROGRESS REPORT

Results as of: 11/30/2022

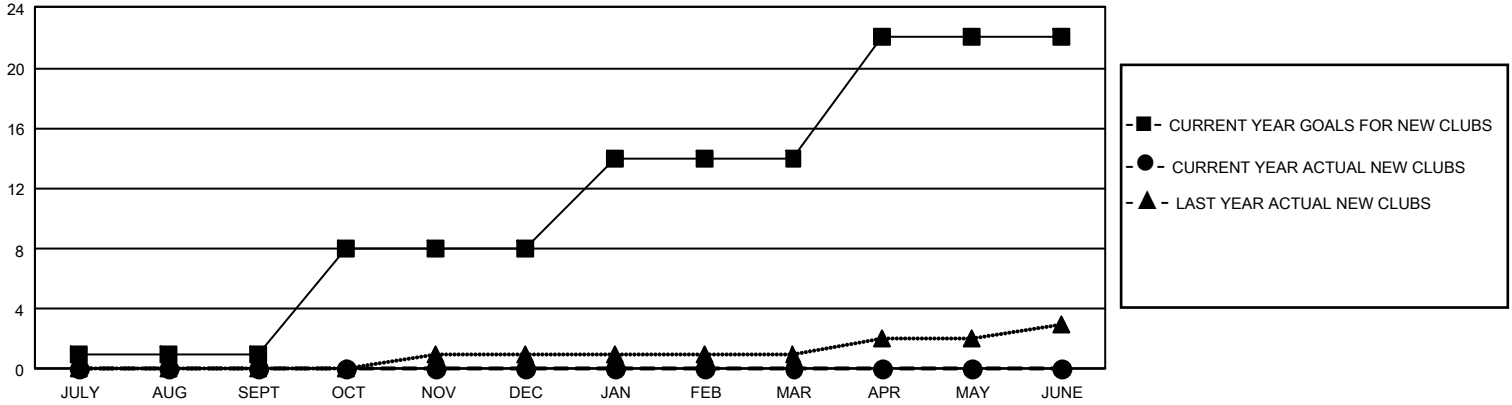
GMT Constitutional Area 1, Group C

REPORT DOES NOT INCLUDE CLUBS IN UNDISTRICTED AREAS.

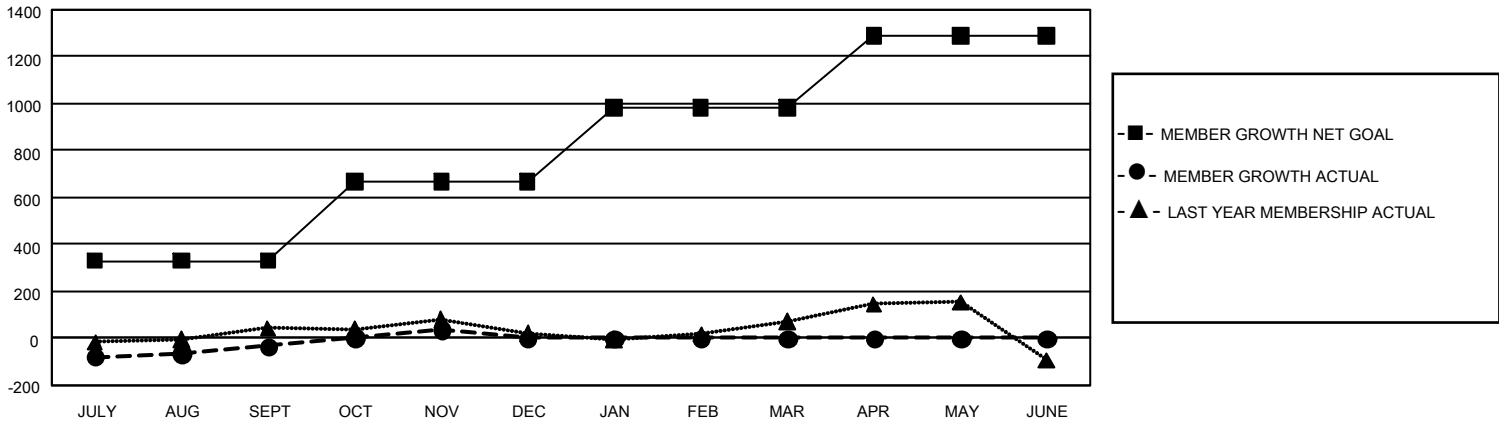
| Clubs | | | |
|-----------------------|---------------|-----------|---------------|
| RESULTS FOR 2022-2023 | | | |
| QUARTER | NEW CLUB GOAL | NEW CLUBS | DROPPED CLUBS |
| JULY/AUG/SEPT | 3 | 0 | 4 |
| OCT/NOV/DEC | 21 | 0 | 0 |
| JAN/FEB/MAR | 18 | 0 | 0 |
| APR/MAY/JUNE | 24 | 0 | 0 |

| Members | | | |
|-----------------------|------------------------|----------------------|--|
| RESULTS FOR 2022-2023 | | | |
| QUARTER | MEMBER GROWTH NET GOAL | MEMBER GROWTH ACTUAL | DROPPED MEMBERS ACTUAL (including transfers) |
| JULY/AUG/SEPT | 330 | 448 | 416 |
| OCT/NOV/DEC | 338 | 324 | 242 |
| JAN/FEB/MAR | 313 | 0 | 0 |
| APR/MAY/JUNE | 308 | 0 | 0 |

GOALS AND ACTUAL NEW CLUBS CUMULATIVE



GOALS AND ACTUAL MEMBERS CUMULATIVE



| | | | |
|------------------------|---|---------------------------------|-----------------|
| DROPPED CLUBS: 4 | 287 CLUBS OF 628 ADDED 1 OR MORE NEW MEMBERS | <u>GENDER DISTRIBUTION</u> | |
| <u>DROPPED MEMBERS</u> | | MALE | 13,275 (67.75%) |
| DECEASED | 103 | FEMALE | 6,310 (32.21%) |
| CLUB CANCELLED | 17 | NON BINARY | 0 (0.00%) |
| OTHER | 539 | PREFER NOT TO ANSWER | 8 (0.04%) |
| TOTAL | 659 | TOTAL FAMILY UNIT MEMBERS | 3,907 |
| | CLICK HERE FOR CUMULATIVE MEMBERSHIP DATA | FAMILY MEMBERS PAYING HALF DUES | 1,981 |